

HEDIIP

Welcome

SROC Conference: Breakout Session 2 – Data Language Project



Agenda

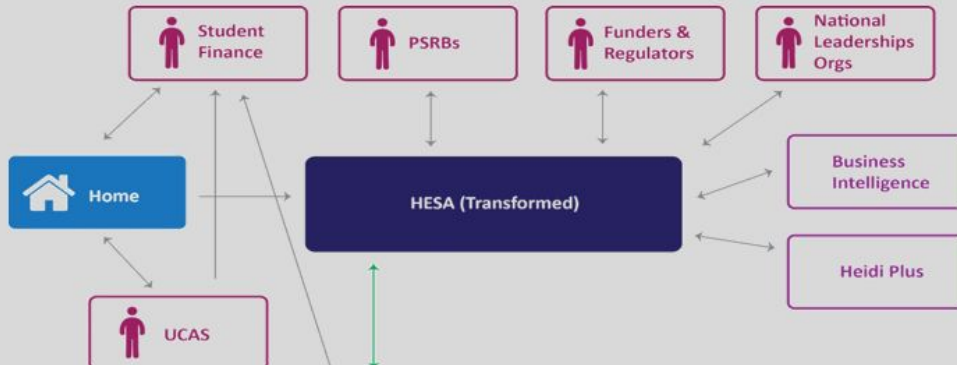
- Welcome
- Context – HEDIIP and Data Futures
- Model Development to Date
- Work
- Next Steps



HEDIIP and Data Futures

SROC Conference: Breakout Session 2 – Data Language Project

Context



on landscape..."



rs

<p>Enable timely data collection and reporting</p>	<p>Reduce the burden on data providers</p>	<p>Drive improved value for money</p>	<p>Deliver data that is fit for purpose</p>	<p>Support changes to data governance across the sector (HEDIIP)</p>
---	---	--	--	---

Data will be collected in year.

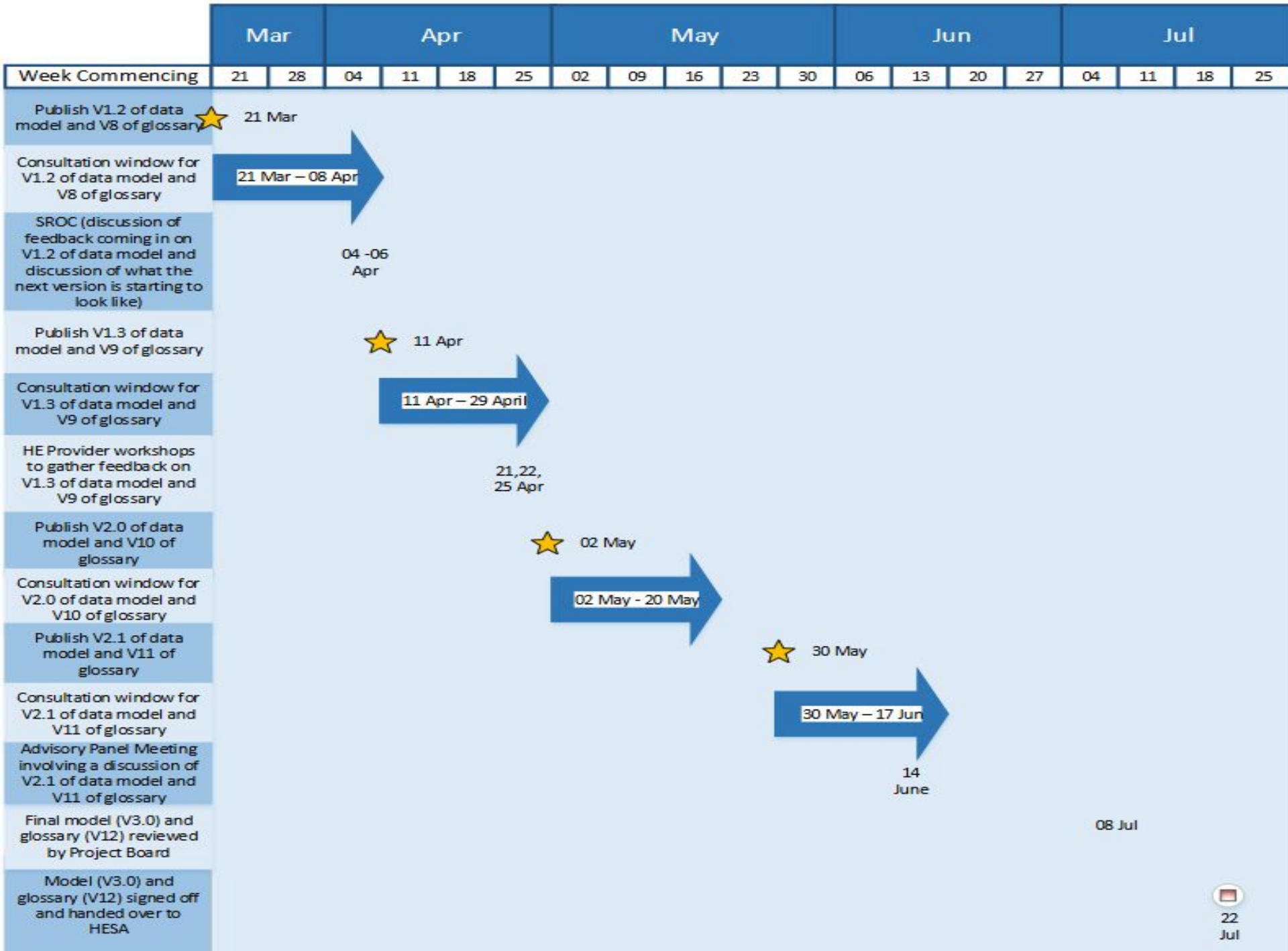
Collection processes streamlined. Duplicate collections reduced.

More value generated from data collected through greater sharing of core data.

Data requirements assessed and value communicated to data providers.

HESA will collect data on behalf of other data collectors (PSRBs, Funders etc).

BIS 2011) raph 6.22





Model Development to Date

SROC Conference: Breakout Session 2 – Data Language Project



A logical model

Is

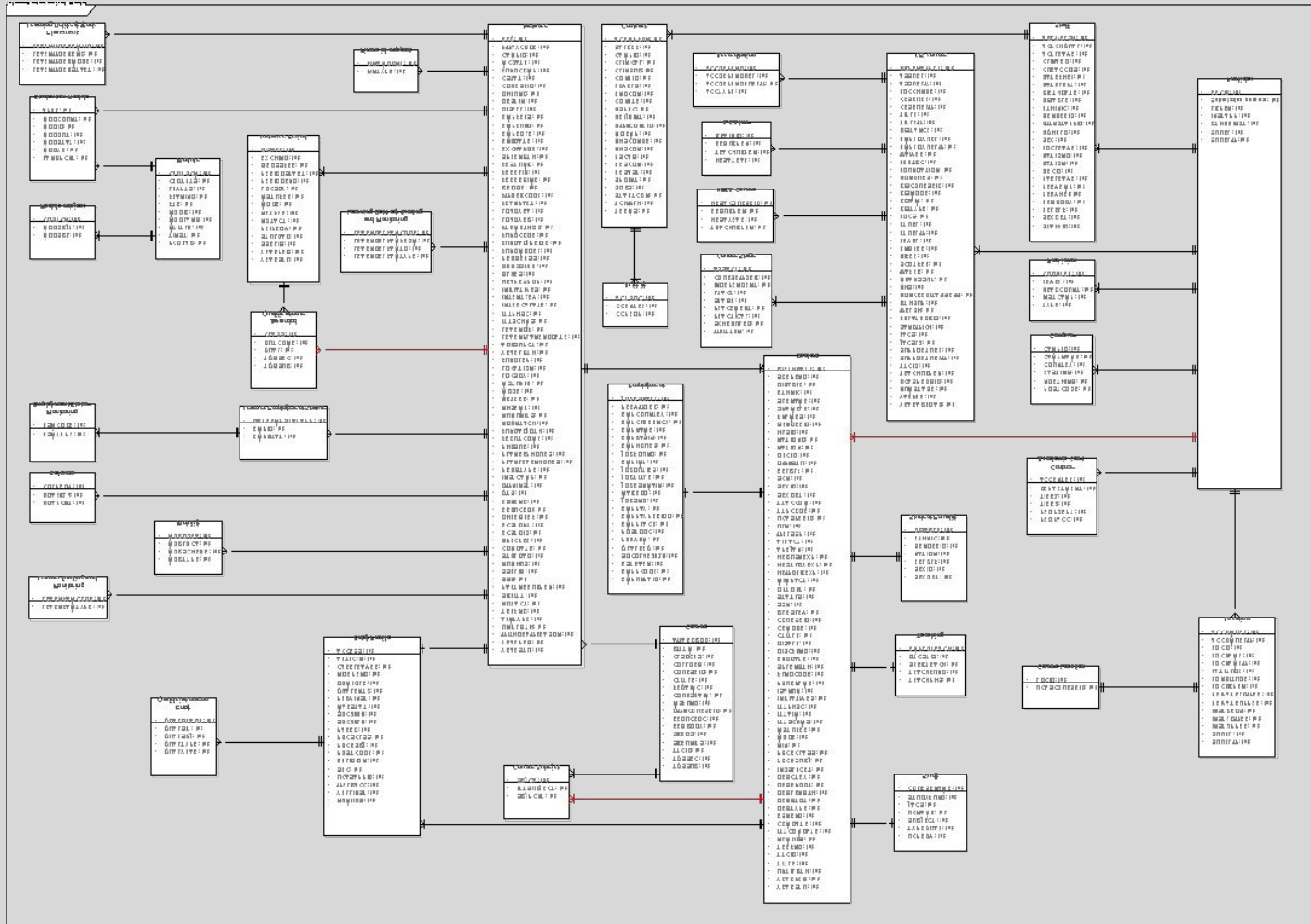
- A detailed representation of the sector's data;
- Independent of any particular technology;
- Using a defined business language.

Isn't

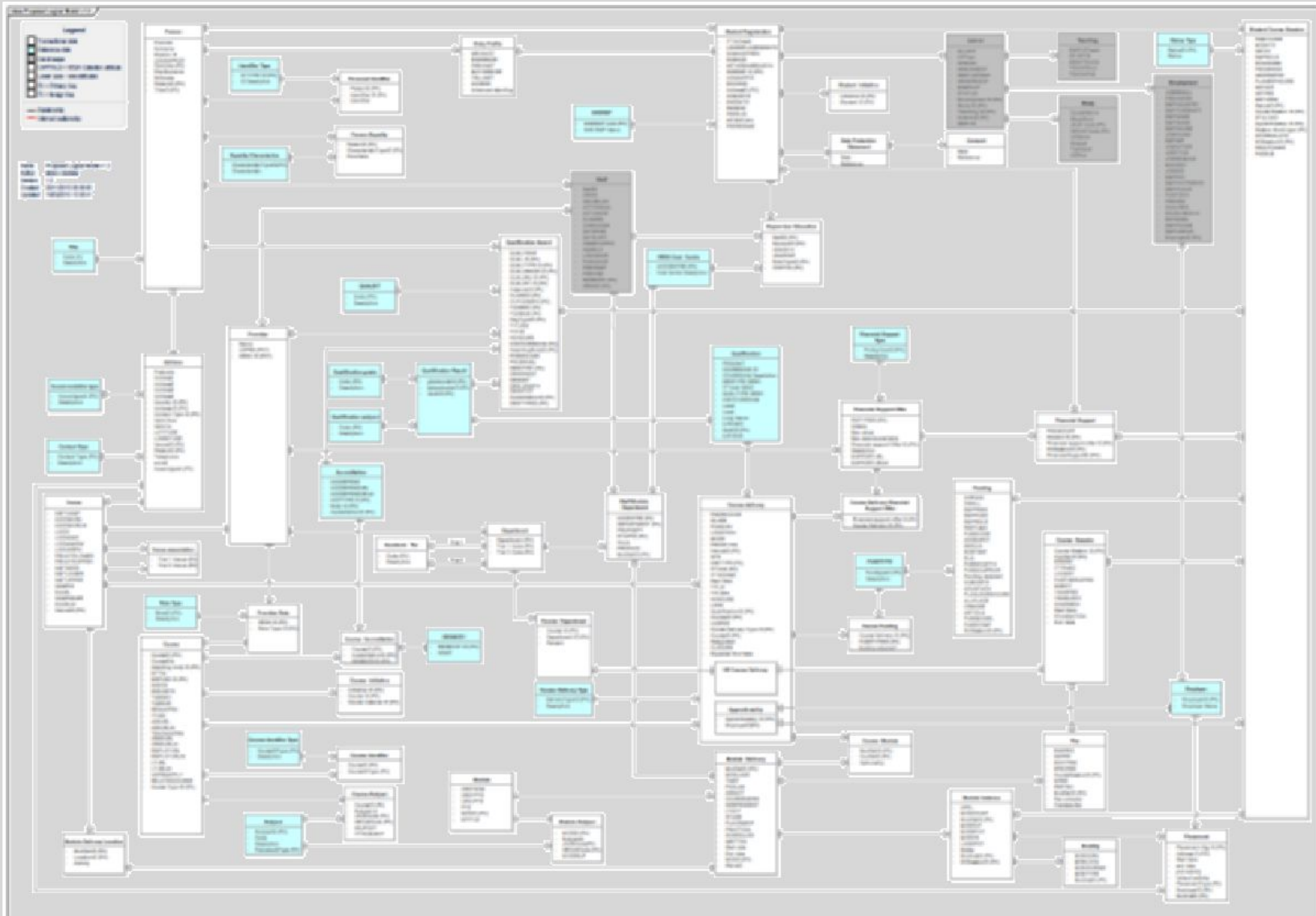
- High-level and conceptual;
- The design for any specific database (or HESA return);
- Using a programming language.

The logical model defines *entities*, their *attributes* and the *relationships* between them.

The current mode



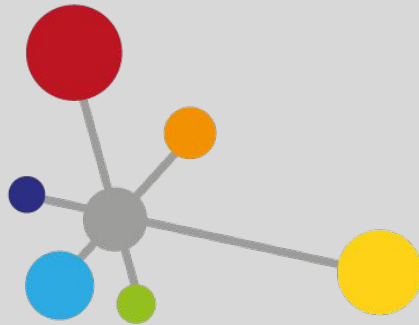
Version 1.2





Version 1.3

- To be published 11 April 2016
- HE Provider workshops 21, 22, 25 April 2016
- Changes under investigation:
 - Organisations and their structures;
 - Collaboration;
 - Languages and delivery.
- Detail on attributes starting in Version 2.0, 2 May 2016



HEDIIP

Work

SROC Conference: Breakout Session 2 – Data Language Project



Let's go into detail

Are the attributes in the right places?

- Are they attributes of this entity?
- Can they be calculated from other data in the model?

Do the attributes need to change?

- Because they needed to change anyway
- Because they mix together different data
- Because some values don't make sense in the new model



Group Work

Resources

- Collections mapping spreadsheet
- Copies of the model
- Project team members
- Paper and post-it notes

Process

- Each group has one issue to discuss
- Feel free to move
- Leave your notes as feedback
- Leave your email and we will follow up



Those questions again

Are the attributes in the right places?

- Are they attributes of this entity?
- Can they be calculated from other data in the model?

Do the attributes need to change?

- Because they needed to change anyway
- Because they mix together different data
- Because some values don't make sense in the new model

